

Lightsource Test Report

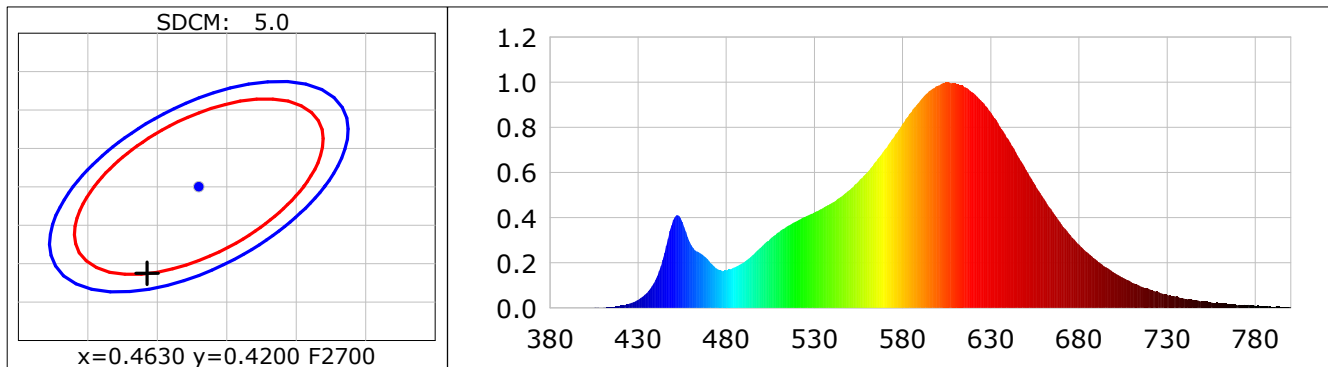
Product Infomation

Product Category: LED STRIP
 Product Spec: BONE 8
 Manufacturer: TECSOLELED S.L.

Product Type: LED STRIP
 Product Number: 406
 Buyer: TECSOLELED S.L.

CIE Colorimetric Parameters

Chromaticity coordinates: $x=0.4593$ $y=0.4087$ $u(u')=0.2630$ $v=0.3510$ $v'=0.5265$
 CCT: $T_c=2694K$ ($duv=-0.00065$) Color Ratio: $R=0.253$ $G=0.724$ $B=0.023$
 Peak Wavelength: 605.7nm Half Bandwidth: 112.4nm
 Dominant Wavelength: 584.5nm Color Purity: 0.605
 CRI: $R_a=82.4$, $avgR(1\sim14)=77.8$, $avgR(1\sim15)=77.5$ TM30: $R_f=85$, $R_g=95$
 GAI: $GAI_BB_8=95.0$, $GAI_BB_15=103.0$, $GAI_EES=46.0$
 R1 =81 R2 =92 R3 =94 R4 =80 R5 =82 R6 =93 R7 =80 R8 =56
 R9 =7 R10=84 R11=80 R12=77 R13=84 R14=98 R15=73
 Color Quality Scale: $Q_a=82.5$, $Q_f=84.8$, $Q_p=84.4$, $Q_g=90.5$
 Q1 =77 Q2 =93 Q3 =85 Q4 =81 Q5 =84 Q6 =84 Q7 =83 Q8 =85
 Q9 =93 Q10=91 Q11=87 Q12=84 Q13=82 Q14=72 Q15=74



Photometric Parameters

Luminous Flux: 1387.9 lm Efficiency: 116.48 lm/W Radiant Power: 4.271 W
 Total mains efficacy: 107.86 lm/W Energy Efficiency Class: F (EU 2019/2015)

Electric Parameters

Voltage: 24.000V Current: 0.4965A Power: 11.92W
 Power Factor: 1.0000 Frequency: 0.00Hz

Test Infomation

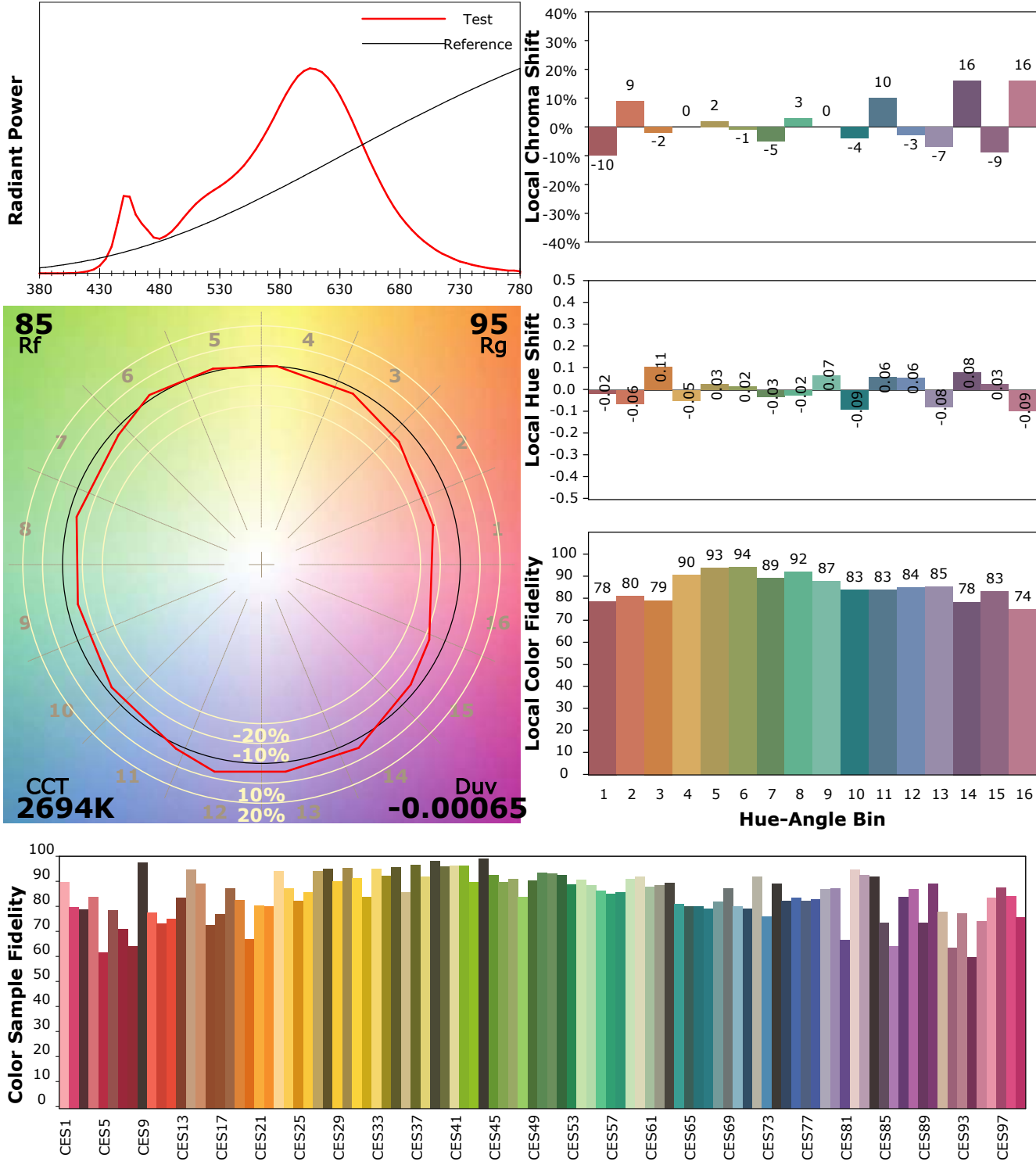
Scan Range: 380~800:1nm Photometric Method: sphere-spectroradiometer
 Stabilization Time: 0 Sec ALC.: 1.0000 Photometric Condition: Sphere diameter: 1.50m, 4PI
 Max of Signal: 49222 (2186) CCD Integration Time: 515.99 ms

IES TM-30-18 Color Rendition Report

Product Information

Product Category: LED STRIP
 Product Spec: BONE 8
 Manufacturer: TECSOLED S.L.

Product Type: LED STRIP
 Product Number: 406
 Buyer: TECSOLED S.L.



Condition: Tx:19.2'C, Ti:17.5'C, R.H.:60%
 Test Lab: TECSOLED S.L.
 Operator: JORDAN GIL DIAZ

Test Device: Inventfine CMS-2S (Plus)
 Test Time: 2021-11-08 17:10:14
 Inspector: